

NTN-SNR SNC & SNCD Plummer Blocks - the perfect long-lasting, added value solution for conveyor systems in extreme environments.

The optimised design provides excellent rigidity and stability, a vibration dampening and improves strength and heat dissipation characteristics in order to provide reduced stress levels in the bearing and a cooler running temperature of its lubricant and thereby extending operating and service life.



The range of NTN-SNR bearing housings increases operating safety and improves the ease of the operation of your equipment. Rigidity, stability, improved heat distribution, increased service life of your bearings and longer maintenance intervals... these are the basic criteria that we take into account in our solutions.

Plummer Blocks in 2 pieces meet all the normal requirements for supporting a bearing on a shaft.

The standard iron cast range for common industrial applications: SNC range for diameters from 20-160mm.

Ductile cast iron ranges for more demanding applications: SNCD500 range from 75-160mm; SNCD30/31 range of wide ductile cast iron bearings covers requirements from 115 to 500mm in diameter.

The advantages of ductile cast iron combined with the exclusive NTN-SNR design:

- +80% tensile strength
- -15% seat deformation
- Robustness and reliability of the installation (savings generated by reducing the frequency of maintenance operations, less machine downtime, reduced grease consumption, less impact on the environment, etc.,)



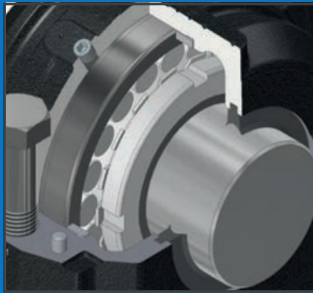
The Benefits:

- Circular Reinforcement - excellent stability & rigidity; optimal vibration behaviour; effective heat dissipation.
- X-Support - reinforced bearing seat; uniform load distribution; extended life in service.
- Large Diameter Bolts - delivered with 2 lubrication holes; 2 grease nipples added (1 tapered; 1 flat-head) all bores sealed with screws; drain hole.
- Optional Grease Regulation Disc - achieves the normal operating temperature more quickly; extends the operating & service life of the bearings.

	Shaft Diameter	For Bearings	Adapter Sleeve	Locating Ring	Seal Options (One per Side)	Seal Type	V-Ring (Option for FS Felt Strip Seal)	Cover Plate	Regulation Disc
SNC509	40	1209K 2209K 22209K	H209 H309 H309	FR85x5.5 FR85x3.5 FR85x3.5	SC509DS	Double Lip	V40A	SC509EC	RDC509
					SC509FS	Felt Strip			
					SC509SV	V-Ring			
					SC509LA	Labyrinth			
					SC509TA	Taconite			
SNC511-609	40	1309K 2309K 21309K 22309K	H309 H2309 H309 H2309	FR100x9.5 FR100x4 FR100x9.5 FR100x4	SC609DS	Double Lip	V40A	SC511-609EC	RDC609
					SC609FS	Felt Strip			
					SC609SV	V-Ring			
					SC609LA	Labyrinth			
					SC609TA	Taconite			
SNC510-608	45	1210K 2210K 22210K	H210 H310 H310	FR90x11.5 FR90x9 FR90x9	SC510DS	Double Lip	V45A	SC510-608EC	RDC510
					SC510FS	Felt Strip			
					SC510SV	V-Ring			
					SC510LA	Labyrinth			
					SC510TA	Taconite			
SNC512-610	45	1310K 2310K 21310K 22310K	H310 H2310 H310 H2310	FR110x10.5 FR110x4 FR110x10.5 FR110x4	SC610DS	Double Lip	V45A	SC512-610EC	RDC610
					SC610FS	Felt Strip			
					SC610SV	V-Ring			
					SC610LA	Labyrinth			
					SC610TA	Taconite			
SNC511-609	50	1211K 2211K 22211K	H211 H311 H311	FR100x11.5 FR100x9.5 FR100x9.5	SC511DS	Double Lip	V50A	SC511-609EC	RDC511
					SC511FS	Felt Strip			
					SC511SV	V-Ring			
					SC511LA	Labyrinth			
					SC511TA	Taconite			
SNC513-611	50	1311K 2311K 21311K 22311K	H311 H2311 H311 H2311	FR120x11 FR120x4 FR120x11 FR120x4	SC611DS	Double Lip	V50A	SC513-611EC	RDC611
					SC611FS	Felt Strip			
					SC611SV	V-Ring			
					SC611LA	Labyrinth			
					SC611TA	Taconite			
SNC512-610	55	1212K 2212K 22212K	H212 H312 H312	FR110x13 FR110x10 FR110x10	SC512DS	Double Lip	V55A	SC512-610EC	RDC512
					SC512FS	Felt Strip			
					SC512SV	V-Ring			
					SC512LA	Labyrinth			
					SC512TA	Taconite			
SNC515-612	55	1312K 2312K 21312K 22312K	H312 H2312 H312 H2312	FR130x12.5 FR130x5 FR130x12.5 FR130x5	SC612DS	Double Lip	V55A	SC515-612EC	RDC612
					SC612FS	Felt Strip			
					SC612SV	V-Ring			
					SC612LA	Labyrinth			
					SC612TA	Taconite			
SNC513-611	60	1213K 2213K 22213K	H213 H313 H313	FR120x14 FR120x10 FR120x10	SC513DS	Double Lip	V60A	SC513-611EC	RDC513
					SC513FS	Felt Strip			
					SC513SV	V-Ring			
					SC513LA	Labyrinth			
					SC513TA	Taconite			
SNC516-613	60	1313K 2313K 21313K 22313K	H313 H2313 H313 H2313	FR140x12.5 FR140x5 FR140x12.5 FR140x5	SC613DS	Double Lip	V60A	SC516-613EC	RDC613
					SC613FS	Felt Strip			
					SC613SV	V-Ring			
					SC613LA	Labyrinth			
					SC613TA	Taconite			
SNC515-612	65	1215K 2215K 22215K	H215 H315 H315	FR130x15.5 FR130x12.5 FR130x12.5	SC515DS	Double Lip	V65A	SC515-612EC	RDC515
					SC515FS	Felt Strip			
					SC515SV	V-Ring			
					SC515LA	Labyrinth			
					SC515TA	Taconite			
SNC518-615	65	1315K 2315K 21315K 22315K	H315 H2315 H315 H2315	FR160x14 FR160x5 FR160x14 FR160x5	SC615DS	Double Lip	V65A	SC518-615EC	RDC615
					SC615FS	Felt Strip			
					SC615SV	V-Ring			
					SC615LA	Labyrinth			
					SC615TA	Taconite			

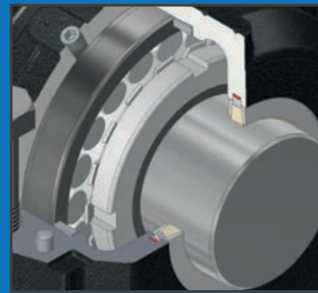
	Shaft Diameter	For Bearings	Adapter Sleeve	Locating Ring	Seal Options (One per Side)	Seal Type	V-Ring (Option for FS Felt Strip Seal)	Cover Plate	Regulation Disc
SNCS516-613	70	1216K 2216K 22216K	H216 H316 H316	FR140x16 FR140x12.5 FR140x12.5	SC516DS	Double Lip	V70A	SC516-613EC	RDC516
					SC516FS	Felt Strip			
					SC516SV	V-Ring			
					SC516LA	Labyrinth			
					SC516TA	Taconite			
SNCS519-616	70	1316K 2316K 21316K 22316K	H316 H2316 H316 H2316	FR170x14.5 FR170x5 FR170x14.5 FR170x5	SC616DS	Double Lip	V70A	SC519-616EC	RDC616
					SC616FS	Felt Strip			
					SC616SV	V-Ring			
					SC616LA	Labyrinth			
					SC616TA	Taconite			
SNCS517	75	1217K 2217K 22217K	H217 H317 H317	FR150x16.5 FR150x12.5 FR150x12.5	SC517DS	Double Lip	V75A	SC517EC	RDC517
					SC517FS	Felt Strip			
					SC517SV	V-Ring			
					SC517LA	Labyrinth			
					SC517TA	Taconite			
SNCS520-617	75	1317K 2317K 21317K 22317K	H317 H2317 H317 H2317	FR180x14.5 FR180x5 FR180x14.5 FR180x5	SC617DS	Double Lip	V75A	SC520-617EC	RDC617
					SC617FS	Felt Strip			
					SC617SV	V-Ring			
					SC617LA	Labyrinth			
					SC617TA	Taconite			
SNCS518-615	80	1218K 2218K 22218K 22318K	H218 H318 H318 H2318	FR160x17.5 FR160x12.5 FR160x12.5 FR160x6.25	SC518DS	Double Lip	V80A	SC518-615EC	RDC518
					SC518FS	Felt Strip			
					SC518SV	V-Ring			
					SC518LA	Labyrinth			
					SC518TA	Taconite			
SNCS318-618	80	1318K 2318K 21318K 22318K	H318 H2318 H318 H2318	FR190x15.5 FR190x5 FR190x15.5 FR190x5	SC618DS	Double Lip	V80A	SC318-618EC	RDC618
					SC618FS	Felt Strip			
					SC618SV	V-Ring			
					SC618LA	Labyrinth			
					SC618TA	Taconite			
SNCS519-616	85	1219K 2219K 22219K	H219 H319 H319	FR170x18 FR170x12.5 FR170x12.5	SC519DS	Double Lip	V85A	SC519-616EC	RDC519
					SC519FS	Felt Strip			
					SC519SV	V-Ring			
					SC519LA	Labyrinth			
					SC519TA	Taconite			
SNCS522-619	85	1319K 2319K 21319K 22319K	H319 H2319 H319 H2319	FR200x17.5 FR200x6.5 FR200x17.5 FR200x6.5	SC619DS	Double Lip	V85A	SC522-619EC	RDC619
					SC619FS	Felt Strip			
					SC619SV	V-Ring			
					SC619LA	Labyrinth			
					SC619TA	Taconite			
SNCS520-617	90	1220K 2220K 22220K 23220K	H220 H320 H320 H2320	FR180x18 FR180x12 FR180x12 FR180x4.85	SC520DS	Double Lip	V90A	SC520-617EC	RDC520
					SC520FS	Felt Strip			
					SC520SV	V-Ring			
					SC520LA	Labyrinth			
					SC520TA	Taconite			
SNCS524-620	90	1320K 2320K 21320K 22320K	H320 H2320 H320 H2320	FR215x19.5 FR215x6.5 FR215x19.5 FR215x6.5	SC620DS	Double Lip	V90A	SC524-620EC	RDC620
					SC620FS	Felt Strip			
					SC620SV	V-Ring			
					SC620LA	Labyrinth			
					SC620TA	Taconite			
SNCS522-619	100	1222K 2222K 22222K 23222K	H222 H322 H322 H2322	FR200x21 FR200x13.5 FR200x13.5 FR200x5.1	SC522DS	Double Lip	V100A	SC522-619EC	RDC522
					SC522FS	Felt Strip			
					SC522SV	V-Ring			
					SC522LA	Labyrinth			
					SC522TA	Taconite			
SNCS524-620	110	22224K 23224K	H3124 H2324	FR215x14 FR215x5	SC524DS	Double Lip	V110A	SC524-620EC	RDC524
					SC524FS	Felt Strip			
					SC524SV	V-Ring			
					SC524LA	Labyrinth			
					SC524TA	Taconite			

NTN-SNR Mounted Ball Bearing Units- the correct choice of sealing systems for every applications



Double Lip Seals DS

Double lip seals have two parts which makes them easy to fit. The shaft speeds can be up to 8 m/s. For shaft diameters over 100mm, misalignment of 0.5°, and shafts smaller than 100mm max 1°. The shaft diameter should lie within the tolerance range h9, with a roughness of less than Ra 3.2 μm.



Felt Strip Seal FS

Felt strip seals are a reliable standard seal for SNC housings. They are easy to fit and can be used for shaft speeds up to 15 m/s. Felt strip seals are suitable for grease lubrication. Misalignment may not be greater than approx. 0.5°. A roughness of Ra 3.2 μm must not be exceeded in the contact area.



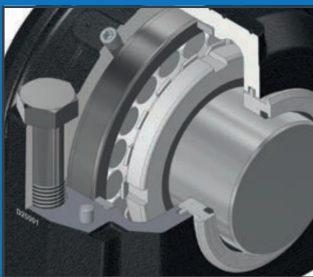
Optional V-Ring Seal

In addition to the felt strip seal (SC...FS) SNC housing units can be fitted with optional V-rings made of NBR. With this combination, the sealing lip has an axial contact with the retainer, ensuring an even better sealing effect (for permissible circumferential speed, see SC...SV).



V-Ring Seal+Contact Washer SV

The SV seal consists of a contact washer made of corrosion protected sheet steel with a vulcanized rubber lip and the V-ring made of NBR. For shafts up to 50 mm, misalignment of up to approx. 1.5° is possible. Larger shaft diameters may not exceed a misalignment of 1°.



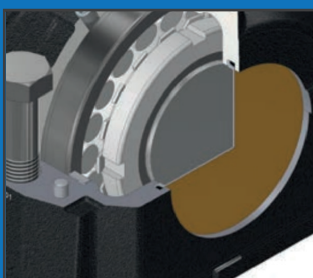
Labyrinth seal LA

For adverse ambient conditions, all SNC housings can be fitted with the labyrinth seals. The bearing arrangement can be operated at the permissible speed for the bearings used. The maximum misalignment of the shaft may not be greater than 0.3°. We recommend an h9 tolerance class for the shaft.



Taconite Seal TA

The Taconite seal is fixed in the sealing groove between the upper and lower housing sections using the O ring. The labyrinth ring rotates with the shaft. This is ensured by a round cord that is inserted between the shaft and the labyrinth ring. The shaft sealing ring is pressed into the stationary part of the seal.



Cover Plate EC

Cover plates are available for all SNC housings. The cover plate is made of corrosion resistant sheet steel and has a circular rubber lip made of NBR. It is fixed in the sealing groove and effectively seals the housing. Cover plates can be combined with any other seal in the SNC range.

Examples of ordering SNC bearing housing

A

Pillow Block housing for through shaft; self-aligning ball bearing 2212 with cylindrical bore for shaft diameter 60 mm; felt strip seal with additional V-ring; floating bearing version.

1 Pillow block housing	NTN-SNR	SNC 212-310
1 Self-aligning ball bearing	NTN-SNR	2212
2 Felt strip seals	NTN-SNR	SC212FS
2 V-ring seals	NTN-SNR	V70A

B

Pillow block housing for shaft end bearing arrangements; self-aligning roller bearing 23218K with adapter sleeve for shaft diameter 80mm; double lip seal; regulation disc; fixed bearing version.

1 Pillow block housing	NTN-SNR	SNC 518-615
1 Self-aligning roller bearing	NTN-SNR	21218EK
1 Adapter sleeve	NTN-SNR	H2318
2 Locating rings	NTN-SNR	FR160X6,25
1 Double lip seal	NTN-SNR	SC518DS
1 Cover plate	NTN-SNR	SC518-615EC
1 Regulation disc	NTN-SNR	RDC518

